

## Resistors in Series and Parallel Circuits

(Using CCK simulation)

Learning Goals: Students will be able to

- Discuss basic electricity relationships in series and parallel circuits
- Build circuits from schematic drawings
- Use voltmeters and ammeters to take readings in circuits.
- Provide reasoning to explain the measurements in circuits.

### I. Series Circuit

Construct the circuit figure 1 using The Circuit Construction Kit (CCK) simulation at the PHeT site. Make the resistors have different value and record the value of each resistor. Use the ammeter moving it to take readings in the different places seen in figure 2. Then use the voltmeter to take voltage readings. Calculate R using Ohm's Law ( $V=IR$ ) for the total resistance in last column.

Figure 1

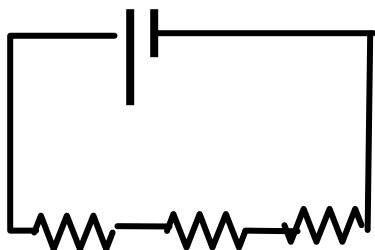
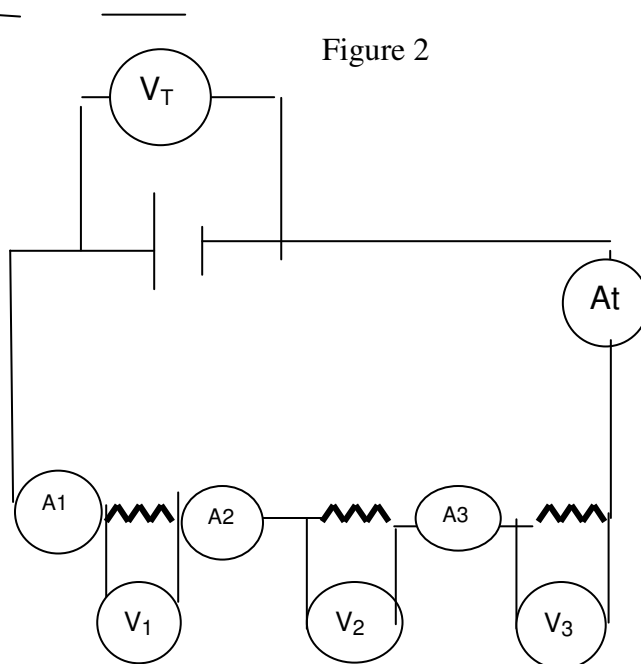


Figure 2



Resistor	Voltage(V)	Current (A)	Resistance ( $\Omega$ )
1			
2			
3			
Total	$V_T$ reading	$A_T$ reading	$R_T = V_T / I_T$

- a. How is the total resistance related to the individual resistances? Total current to the individual currents? Total voltage to the individual voltages?
- b. Write a paragraph explaining what you think is happening in series circuits to cause the above relationships to occur. (You made a similar circuit with light bulbs using CCK. You may want to experiment with the sim again, keeping in mind that light bulbs are just resistors that glow.).

## Resistors in Series and Parallel Circuits

(Using CCK simulation)

### II. Parallel Circuits

Wire the circuit in figure 1 with the same value resistors that you used in Part 1. Take readings in different places shown in figure 2 by moving the meters. Make a table like the one below, calculating total resistance using Ohm's Law ( $V=IR$ ) for the last column.

Resistor	Voltage (V)	Current(A)	Resistance( $\Omega$ )
1			
2			
3			
Total	$V_T$ reading	$A_T$ reading	$R_T=V_T/I_T$

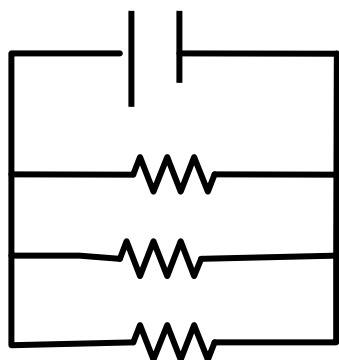


Figure 1

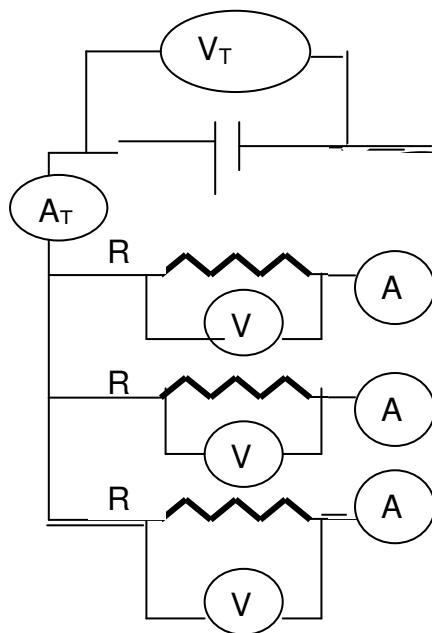


Figure 2

- How is the total resistance related to the individual resistances? Explain what you think is happening.
- Look up the mathematical relationship for finding total resistance in a parallel circuit. Show that your data fits the equation.
- Imagine you and your friends are running in the neighborhood like electrons flowing through a circuit. Make up stories that would serve as analogies for a parallel versus series circuits. Share your stories with another group and see if they make sense.
- Summarize the similarities and differences between the series and parallel circuits. Include your reasoning about what you think is happening.